

TO US, HOUSING IS NOT A GAME



montgomery county
coalition for the homeless

2011 ANNUAL REPORT

CHIPP

HOPE
HOUSING

PENNSYLVANIA
RAILROAD



SAFE
HAVENS

COMMUNITY
CHEST



FOLLOW
INSTRUCTIONS
ON TOP CARD

HOME
FIRST

CORDELL
PLACE

CHANCE



MAPLEWOOD

FREE



B & O
RAILROAD

SENECA
HEIGHTS
APARTMENTS

LAYTONSVILLE

HBCAC



Montgomery County Coalition for the Homeless (MCCH)

Table of Contents

Letter from Board Chair & Note from Executive Director	2
Mission & FY2011 Highlights	3
Housing is Not a Game: Who We Serve	4
Permanent Housing	
Cordell Place	6
Creative Housing Initiative Pilot Project & Home First	7
Hope Housing & Seneca Heights Apartments	8
Partnership for Permanent Housing	9
Safe Havens Housing & Emergency Shelter	
Safe Havens & Home Builders Care Assessment Center	10
Community Outreach & Advocacy at MCCH	11
Summary of FY2011 Revenue & Expenses	12
Independent Auditor's Report	13
FY2011 Donors/Supporters	14
Board of Directors & Staff	Back Cover





Letter from the Board Chair

Dear Friends,

Housing is not a game to MCCH. It is the bedrock of a family and of a community. We chose this as the theme for fiscal year 2011 to focus on the importance of housing in a community and to demonstrate MCCH's commitment to this most critical right. In this annual report, you will learn more about our two approaches to ending homelessness: providing direct services, and public education and collaboration.

The last half of the year was a time of transition for MCCH, but our drive to end homelessness and solve housing crises did not lessen. We were proud to serve 1,595 men, women and children in our eight programs, providing a range of housing and supportive services to people experiencing homelessness in our community.

Not only did we maintain critical services, we expanded them with the opening of Cordell Place, a new permanent housing program, in downtown Bethesda. The building was developed by our affiliate agency, Coalition Homes. Cordell exemplifies our dedication to permanent housing with supportive services. MCCH also continued as a critical voice in the community for the fight to end homelessness this year.

We accomplished all of this with the help of a record number of volunteers and our amazing staff. We sincerely thank Julie Maltzman for serving as Interim Executive Director. Her thoughtful leadership and comprehensive knowledge were incredible during this transition.

We look to the future with resolve and confidence that our outstanding services for those in need will continue to grow and that our leadership in the fight to end homelessness will see even more successes. Thank you for joining us as we march forward along real streets where the stakes are high but the rewards of a community where everyone is housed are so very real.

Warmly,

Amy Williard
Chair, Board of Directors

Executive Director's Note

Dear Supporters of MCCH,

Since joining MCCH as Executive Director in the fall of 2011, my excitement at being part of this dynamic organization has only grown. I hope that you enjoy reading the stories of what was achieved with your support in this annual report as much as I did.

I look forward to reporting on our accomplishments in next year's report. There will be more stories of renewal for people who would have lost hope had it not been for MCCH and people like you. We will also report on some revamped outcomes across our multitude of successful programs that demonstrate our commitment to permanent housing and to helping people maintain their housing.

Thank you for your support of MCCH.

Susie Sinclair-Smith
Executive Director



Our Mission

The Montgomery County Coalition for the Homeless leads the effort to end homelessness in our community by creating housing options combined with supportive services, and facilitating collaboration, education and advocacy based on the belief that every person is entitled to the dignity of a home.

FY2011 Highlights

For over 20 years, MCCH has led efforts to end homelessness and serve the most vulnerable in our community. Fiscal year 2011 was no exception as we:

- Provided quality affordable housing and supportive services to people experiencing homelessness through eight distinct programs and an affiliate agency, Coalition Homes, providing permanent housing, Safe Havens housing, and emergency shelter.
- Expanded our reach to meet the immense and growing need in our community.
- Advanced our commitment to ensure that every person in our community has the dignity of a home.
- Demonstrated that ongoing supportive services provided in a stable, permanent housing environment are key factors in breaking the cycle of homelessness and achieving independent living.

Last year, MCCH's programs together served 1,595 homeless and formerly homeless men, women and children. All of our clients faced housing crises and had limited income. Because of MCCH and its supporters:

- 128 families and 259 individuals were provided with permanent supportive housing.
- 59 individuals were provided with Safe Havens housing
- 30 families were provided with transitional housing.
- 28 households (20 individuals and 8 families) moved to permanent supportive housing from our transitional and Safe Havens housing.
- 156 men moved to more stable housing from emergency shelter.
- Over 200 adults (single individuals or heads-of-household from families) were employed either full or part-time. Another 49 adults were enrolled in an educational or vocational program at a local community college or other accredited programs.

On the following pages, you will learn more about each of our successful direct service programs, as well as our public education and collaborative work in the community.

Housing is Not a Game: Who We Serve

While playing the game of Monopoly, excitement reigns when you acquire property and buy a house. But the joy and relief experienced by the people we serve when they leave homelessness and enter their new homes far surpasses any emotions Monopoly winners have ever felt.

With your help, every day we work to assist those in our community who are most vulnerable and deserve the dignity of a home. Your support means that people like Donna, Beth, Troy, and Sarah are stably housed and poised to achieve their dreams.

Donna's Story

After a period of homelessness, drug abuse, and mental illness, Donna came to MCCH's **Seneca Heights Apartments (SHA)** having just given birth to her first child. Donna had experienced negative influences in the past and was struggling to adjust to motherhood. The stability and structure offered by SHA meant that Donna was able to focus on her well-being and that of her child.



Donna is now repairing her credit, planning to attend GED classes, contributing to her savings account, and regularly attending AA meetings and therapy appointments. Feeling more confident, Donna is also now advocating on her own behalf and is motivated to make even more positive changes in her life.

Beth's Story

In 2007, Beth lost her job due to a company merger, and she and her three children became homeless. They moved into Beth's mother's house, but crowded conditions forced them to leave in 2008. The family spent time in emergency shelter and transitional housing before Beth was accepted into MCCH's **Partnership for Permanent Housing (PPH)** program in 2009. Beth and her family finally had a place to call home again, with the stability that comes from permanent housing combined with supportive services. During her entire struggle, Beth demonstrated an intense drive to succeed. She paid off over \$3,000



in debt and worked for the IRS as a receptionist while studying for her bachelor's degree. In 2011, Beth purchased a home in Silver Spring with the help of grants for the down payment and closing costs. She graduated and has already been accepted into graduate school. According to Beth, "PPH allowed my family to get back on our feet financially, emotionally and spiritually. We are now self-sufficient and couldn't have done it without your support. My case workers were always kind and never made me feel ashamed of my situation. You all are truly a blessing."

Troy's Story

Troy, now 48, was 23 when his wife divorced him and moved to Florida with their infant son. Troy lapsed into a severe depression. He eventually lost his job as a contractor for a home improvement company and lost his home when he could not make the mortgage payments. Determined to get back on his feet, Troy found a job as a stock clerk at a hardware store and was able to rent a room nearby. When the store's business declined, Troy's hours were reduced and he was no longer eligible for his employer's health insurance plan, forcing him to pay for psychiatric care and medication out of pocket. He then fell behind on his utility



payments and was eventually evicted. Troy began sleeping in his car in the parking lot of an abandoned building. He describes this period as the darkest, most humiliating time in his life. A friend told Troy about a local

free lunch program where an outreach worker referred him to MCCH's **Cordell Place**. Now stably housed, Troy is working with his case manager to explore the possibility of returning to college. His case manager also helped him apply for medical assistance and food stamps. No longer feeling ashamed of his situation, Troy reconnected with his son and was able to save up for a plane ticket to visit him in Florida.

Sarah's Story

When Sarah moved into Safe Havens in February 2010, she had no income or benefits. Sarah spent most of the day in her room, not interacting with other residents and barely communicating with staff. With the help of her case manager, Sarah gradually began to socialize with her housemates, apply for state and federal disability benefits, and manage her money with a bank account and card. Sarah then began attending a life skills and psychiatric rehabilitation



day program where she developed the cognitive, emotional and social skills necessary for independent living. She opened up and seemed to enjoy life more. Staff interviewed Sarah and accepted her into permanent

supportive housing in an apartment in Germantown as part of our **Creative Housing Initiative Pilot Program (CHIPP)**. Sarah moved into her new home a year and one month from the day she entered Safe Havens.



Permanent Housing

Our permanent housing, combined with supportive services, is bolstered by our years of community engagement, research, and collaboration to create the best array of resources possible for homeless populations. Our permanent housing programs work to ensure housing stability and community connections for our clients.



Cordell Place

Cordell Place, our newest permanent supportive housing program, opened to its first residents in December 2010 and was fully occupied by March 2011. Cordell provides permanent housing for 32 single adults exiting homelessness. With its location in downtown Bethesda, Cordell demonstrates our commitment to housing formerly homeless people in all parts of the county. It is the first major program in a building owned by Coalition Homes, and it is also the first true Personal Living Quarters housing model in the county.

The first 30 Cordell residents had been homeless for over 100 years cumulatively. Most residents were previously staying in emergency shelters and transitional living facilities. A few were living on the streets.

Like our other programs and designed to help residents live as independently as possible, Cordell Place requires residents to sign a one-year lease and pay 30% of their income as rent. Case managers work with the residents to develop various independent living skills, including goal setting, budgeting, and accessing community resources.

Permanent supportive housing solutions like Cordell Place are a vital piece of our community's efforts to house formerly homeless people, especially those who were chronically homeless. We are proud that Cordell Place residents can experience dignity, peace and security in their new homes.

In the first months of the program, 32 people were served at Cordell and achieved the following:

- 78% paid rent on time.
- 91% of those eligible applied for benefits.
- 96% maintained safe and sanitary conditions in their units.
- 81% participated in recommended treatment.
- 93% utilized community resources.



Creative Housing Initiative Pilot Project (CHIPP)

The Creative Housing Initiative Pilot Project (CHIPP) permanently houses low-income single adults who often suffer from multiple disabilities and who were frequent users of the emergency medical and corrections systems. The CHIPP case manager helps residents achieve and maintain housing stability with vital supportive services that are tailored to their individual needs.

In FY11, CHIPP served 18 single adults who met the following program goals:

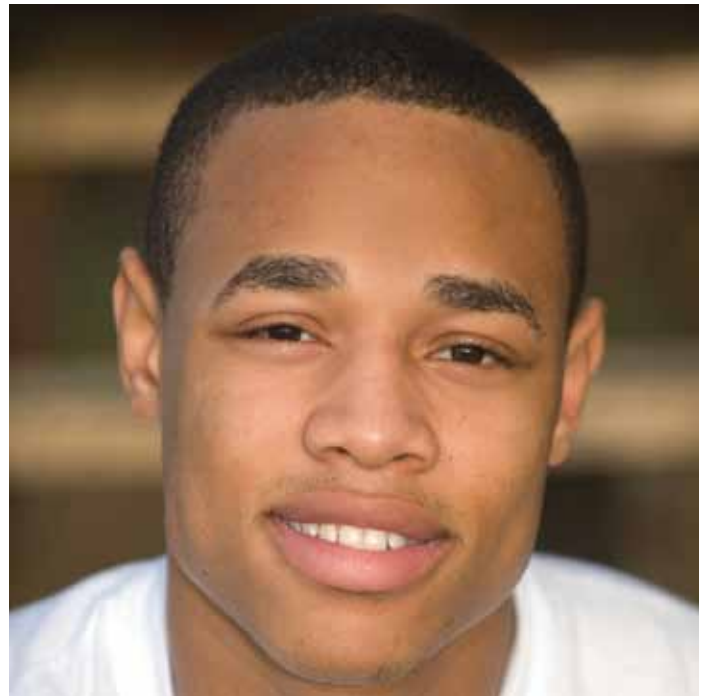
- 94% developed critical new life skills.
- 94% utilized community resources.
- 88% regularly engaged in community activities or worked part-time.
- 94% independently managed their health care appointments and medication.

Home First

A permanent supportive housing program for chronically homeless single adults; Home First residents live in apartments or shared houses, and receive wraparound supportive services to maintain their housing. Five participants are approaching four years with the program (including one client who experienced 20 years of homelessness prior to entering Home First), and 12 residents have been housed for three years.

Thirty-one single adults were served in Home First this year and achieved the following:

- 96% paid their rent on time throughout the year.
- 65% utilized community resources.
- 90% maintained steady commitment to mental health treatment, increasing both their housing stability and self determination.





Permanent Housing

Hope Housing

Through the Hope Housing program, MCCH partnered with three organizations during fiscal year 2011 to provide permanent supportive housing to formerly homeless singles and families with disabilities. Interfaith Works, Stepping Stones Shelter, Community Ministries of Rockville, and MCCH provided direct services to 40 individuals in eight shared houses and to two families in their own houses. MCCH also managed the program's finances and administration.

In FY11, 63 people, including two single-parent families with 8 children between them and 53 single adults, were served in Hope Housing. Of the total, MCCH directly served 14 single adults in Hope Housing who met the following goals:

- 86% remained successfully housed for one year.
- 100% achieved at least one goal in their service plan.
- 72% enrolled in an educational, vocational or employment training program or were employed.



Seneca Heights Apartments

Seneca Heights Apartments (SHA) offers housing combined with supportive services for individuals and families. Forty single adults live in permanent housing and 17 families resided in transitional housing in this renovated motel. Transitional housing for families at SHA will convert to a permanent housing model in fiscal year 2012. All residents receive case management and social services, and there are many opportunities to engage in community activities, including an active tenant council.

Forty-nine single adults and 30 families, including 34 adults and 49 children, were served at SHA in FY11, and residents achieved the following:

Single Adults

- 16% successfully moved on to other housing, including market rate or subsidized.
- 43% increased their income through employment or stipend.
- 43% volunteered to make SHA a better and brighter community.
- 84% paid their rent on time.

Families with Children

- 50% successfully moved on to other housing, including family, market rate or subsidized.
- 23% of heads-of-household went back to school to increase employment opportunities.
- 33% of heads-of-household were employed.

Children in SHA

The well-being of children and youth at SHA is very important. This year, one youth graduated from high school. Seven infants and toddlers were enrolled in a local Head Start program, and eight students participated in an on-site home-work club.



Partnership for Permanent Housing

The innovative Partnership for Permanent Housing (PPH) program is one of the community's foremost "Housing First" programs for families and single adults. MCCCH collaborates with the Montgomery County Departments of Health and Human Services and Housing and Community Affairs, the Housing Opportunities Commission, and private foundations to deliver home-based case management with quicker access to permanent housing. The lives of formerly homeless families with children and individuals are transformed with supportive services and housing in scattered sites across the community.

PPH served 127 families with children and 66 single adults in FY11. Fourteen new families and six new individuals left homelessness when they entered PPH this year. Eleven families and two individuals successfully graduated from PPH. Other accomplishments included:

Families with Children

- 98% maintained stable housing.
- 83% paid their rent on time.
- 78% increased their income.
- 61% acquired or maintained employment.

Single Adults

- 97% maintained stable housing.
- 94% paid their rent on time.



Children in PPH

In FY11, PPH served 186 school-aged children. Of those children, 96% percent advanced to the next grade level and 93% improved their attendance after one year in the program. There were 81 children recognized for academic achievement, attendance, sportsmanship, or community service. Seven students graduated from high school and four were awarded full or partial scholarships for college. Case managers encourage parental involvement and partnerships with educators and school officials, and they routinely discuss academic achievements and challenges with the families.





Safe Havens Housing & Emergency Shelter



Safe Havens

MCCH provides housing with intensive supportive services to homeless adults with severe mental illness through its longest-running program, Safe Havens. The program fills a distinct need in our community for services for this extremely

vulnerable population, often deemed the most difficult to serve due to the complexity and severity of their mental illness. Safe Havens is a structured and safe living environment that enables clients to move at their own pace with the ultimate goal of moving into permanent supportive housing. Clients have access to case management, counseling, life skills development, and on-site psychiatric services in four shared living facilities.

Safe Havens served 59 adults during FY11 with the following accomplishments:

- 70% who left the program moved into permanent housing.
- 14% who left the program moved in with friends or family.
- 91% of individuals placed in permanent housing remained housed for at least one year.
- 100% of individuals who entered with no income were assisted in applying for and receiving benefits.

Home Builders Care Assessment Center

The Home Builders Care Assessment Center (HBCAC) men's emergency shelter offers a variety of supportive services and access to basic amenities with the long-term goal of connecting clients to available resources and more stable housing. Case management, medical care, and vocational services are included among its vital services. This year, HBCAC provided 41,104 bed nights of shelter. We are especially proud that 156 men were able to move into more stable housing as a result of engaging with our services – this was a 21% increase over last year.

This fiscal year, 820 men, including 63 veterans, were served at HBCAC. Also:

- 245 clients agreed to a service plan with a case manager.
- 211 men were connected to supportive services in the community.

The on-site HBCAC Back to Work program served 101 men, including 75 new participants, with job training and vocational counseling, including 44 job readiness classes. Accomplishments included:

- 90 men received assistance with obtaining employment.
- 56 men obtained employment.
- 53 men received job retention services.
- 11 men enrolled in job skill courses.



Community Outreach and Advocacy at MCCH

People Make a Difference

Alongside our direct service program for the homeless population, MCCH advocates, educates and collaborates with a range of community partners to obtain needed resources and achieve solutions to homelessness. Together we are working to end homelessness in Montgomery County. Our partnerships make a big difference for so many people in our community.

Volunteers

In fiscal year 2011, over 2,000 volunteers gave 7,027 hours of service to our programs. MCCH volunteers offered a wide range of skills and support to our



programs and clients. New volunteer offerings included yoga classes and pet therapy sessions. The Home Builders Care Assessment Center, our men's emergency shelter, received approximately 78,000 donated meals from community members. Back to Work mentoring volunteers taught financial and computer literacy classes and helped the men at the shelter create resumes in order to secure employment. Volunteers fulfilled holiday wish lists for five programs, including the World Bank volunteers who donated 150 presents for the children in Partnership for Permanent Housing and Seneca Heights Apartments. Many more volunteers went above and beyond by throwing holiday parties, holding collection drives, assisting in the office, landscaping at our sites, hosting health and wellness classes, and much more.

Community Education

MCCH continues to lead in advocacy and public education at the local levels around issues related to housing and homelessness. MCCH raised awareness through interviews on Clear Channel's five area radio stations in addition to local media. We also provided homeless awareness education to over 50 community groups representing close to 7,000 people, including 16 Mini-Walks with educational presentations through the Fannie Mae Help the Homeless program.

At MCCH's fourth annual HOME Conference, close to 200 providers representing 37 agencies learned how to better serve homeless and formerly homeless clients.



On February 24, 2011, more than 200 people attended Celebrating Partnerships 2011. With the theme of Monopoly, it was emphasized throughout the night that to us, housing is not a game. We celebrated the opening of our newest permanent housing program, Cordell Place, and honored partners who help us continue our impact in the community.

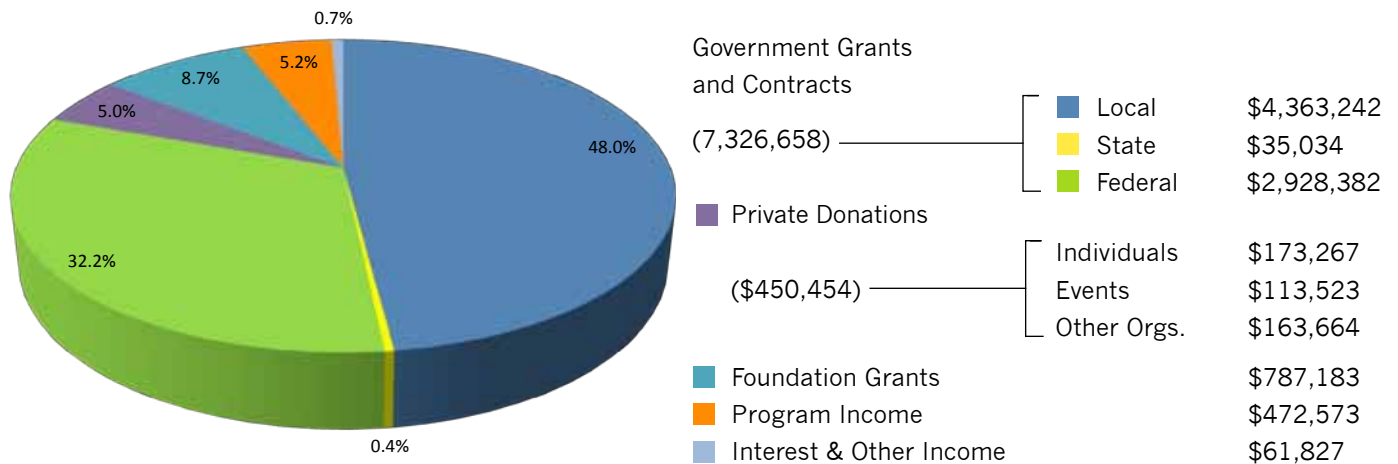
On May 1, 2011, community members participated in our annual Shelter Walk 'n Roll event in Rockville Town Square. They helped raise funds for MCCH's programs and to raise awareness of homelessness in our community. This annual event was filled with fun, music, and education for people of all ages.

2011 Annual Report

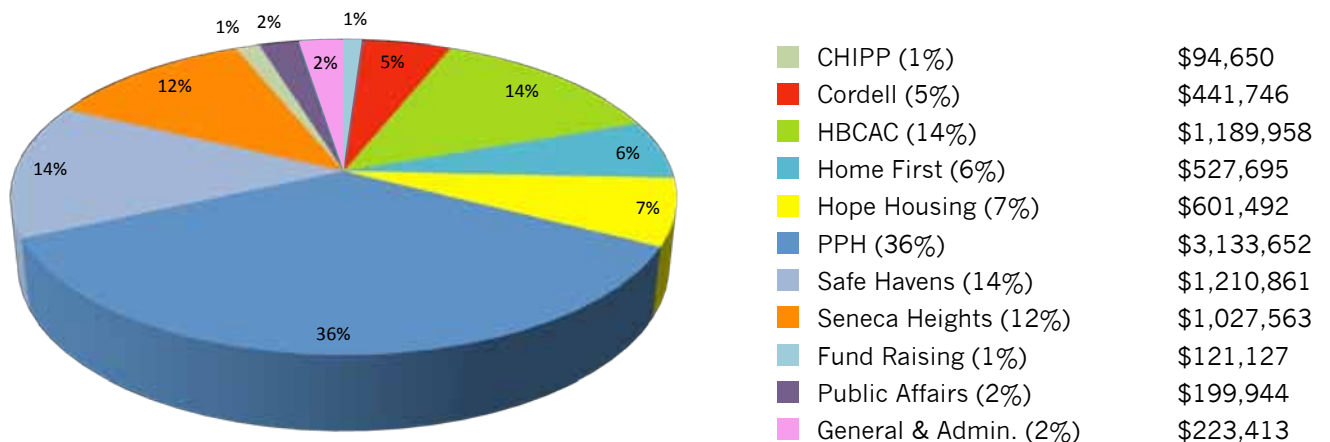


2011 Summary of Revenue & Expenses

2011 Revenue



2011 Expenses



* The financial statements for the Montgomery County Coalition for the Homeless were audited by an independent auditor and are available in their entirety at the MCCH administrative offices.

** Approximately \$1,300,000 of in-kind income and expenses are not included in these figures.

ERIC BOLIN CPA P.C.

Independent Auditor's Report

To the Board of Directors
Montgomery County Coalition for the Homeless, Inc.
Rockville, Maryland


I have audited the accompanying statements of financial position of the Montgomery County Coalition for the Homeless, Inc., a not-for-profit organization, as of June 30, 2011 and 2010, and the related statements of activities and change in net assets, functional expenses and cash flows for the years then ended. These financial statements are the responsibility of the Montgomery County Coalition for the Homeless, Inc.'s management. My responsibility is to express an opinion on these financial statements based on my audit.

I conducted my audit in accordance with U.S. generally accepted auditing standards and the standards applicable to financial audits contained in *Government Auditing Standards*, issued by the Comptroller General of the United States. Those standards require that I plan and perform the audit to obtain reasonable assurance about whether the financial statements are free of material misstatement. An audit includes examining, on a test basis, evidence supporting the amounts and disclosures in the financial statements. An audit also includes assessing the accounting principles used and significant estimates made by management, as well as evaluating the overall financial statement presentation. I believe that my audit provides a reasonable basis for my opinion.

In my opinion, the financial statements referred to above present fairly, in all material respects, the financial position of the Montgomery County Coalition for the Homeless, Inc. as of June 30, 2011 and 2010, and the changes in its net assets and its cash flows for the years then ended in conformity with U.S. generally accepted accounting principles.

In accordance with *Government Auditing Standards*, I have also issued my report dated November 7, 2011, on my consideration of the Montgomery County Coalition for the Homeless, Inc.'s internal control over financial reporting and my tests of its compliance with certain provisions of laws, regulations, contracts and grants. The purpose of the report is to describe the scope of our testing of internal control over financial reporting and compliance and the results of that testing and not to provide an opinion on the internal control over financial reporting or on compliance. That report is an integral part of an audit performed in accordance with *Government Auditing Standards* and should be considered in assessing the results of our audit.

My audit was performed for the purpose of forming an opinion on the basic financial statements of the Montgomery County Coalition for the Homeless, Inc. taken as a whole. The accompanying schedule of expenditures of federal awards is presented for purposes of additional analysis as required by U.S. Office of Management and Budget Circular A-133, *Audits of States, Local Governments and Nonprofit Organizations*, and is not a required part of the basic financial statements. Such information is the responsibility of management and was derived from and relates directly to the underlying accounting and other records used to prepare the financial statements. The information has been subjected to the auditing procedures applied in the audit of the basic financial statements and certain additional procedures, including comparing and reconciling such information directly to the underlying accounting and other records used to prepare the financial statements or to the financial statements themselves and other additional procedures in accordance with U.S. generally accepted auditing standards. In my opinion, the information is fairly stated in all material respects in relation to the financial statements as a whole.

Eric Bolin, CPA, P.C.

Rockville, Maryland
December 30, 2011



FY2011 Donors/Supporters

This list comprises cumulative giving between July 1, 2010 and June 30, 2011. We regret any error or omission, and ask that corrections be brought to our attention. Please contact anesby@mcch.net or 301-917-6657.

Congregations

Archdiocese of Washington
Ashton United Methodist Church
Bethesda Jewish Congregation
Christ Congregational Church –
UCC, Silver Spring
Church of the Resurrection,
Burtonsville
Damascus United Methodist
Church - Harwood House
Damascus United Methodist
Women
Episcopal Church of the
Ascension, Gaithersburg
Epworth United Methodist
Church, Gaithersburg
Faith United Methodist Church,
Rockville
First African Methodist Episcopal
Church, Gaithersburg
First Baptist Church,
Gaithersburg
Global Mission Church of
Greater Washington, Silver
Spring
Heritage Christian Church,
Wheaton
The Inter-Faith Chapel Missions
Committee
The Inter-Faith Chapel, Silver
Spring
Interfaith Committee for the
Homeless
Millian Memorial United
Methodist Church, Rockville
New Hope Presbyterian Church,
Derwood
Our Lady of Grace Church, Silver
Spring
Salem United Methodist Church,
Brookeville
St. Francis Episcopal Church,
Potomac
St. Francis of Assisi Catholic
Parish, Derwood
St. John's Episcopal Church,
Norwood Parish, Chevy Chase
St. Matthew Presbyterian
Church, Silver Spring
St. Patrick's Catholic Church,
Rockville
St. Paul's United Methodist
Church, Kensington
St. Raphael Catholic Church,
Rockville
Tikvat Israel Congregation,
Rockville
Trinity United Methodist Church,
Germantown
Unitarian Universalist Church,
Rockville

Corporations and Businesses

AHC Management LLC
American Asset Management
Group, Inc.
Artisan Partners Construction
Services, LLC
Ballard Spahr Andrews &
Ingersoll, LLP
Booz Allen Hamilton
Clark Construction Group, LLC
Costco Wholesale Corporation
Covell Communities
DARCARS Automotive Group
DirectTV
Elm Street Development
England & Company
Ernst & Young LLP
Fisher BioServices
Gallagher Evelius & Jones LLP
Hamel Builders, Inc.
Hutchinson + Associates, L.L.C.
Inside Mortgage Finance
Publications, Inc.
Institute of Real Estate
Management Chapter 92
Insurance Associates, Inc.
J.M. Huber Corporation
Kaiser Permanente
Kim Engineering, Inc.
Linowes and Blocher LLP
McShea Residential Services
MedImmune
Miller & Chevalier Chartered
The Monitor Group, LLC
Monument Construction, Inc.
Morgan Stanley
MTEvans Associates, Inc.
Pascal & Weiss, P.C.
The Pettit Companies
Ralph J. Duffie, Inc.
Reznick Group, P.C.
Sandy Spring Bank
Shearman & Sterling LLP
Tax & Accounting Corp
Urban Ventures, Inc.
Venable LLP
Washington Gas Company
Washington Property Company
Wiencek + Associates Architects
+ Planners
Wilcoxon Construction, Inc.
Wiley Rein LLP
Woori America Bank



Foundations/Family Foundations

Anonymous
Community Foundation for the
National Capital Region
Freddie Mac Foundation
GEICO Philanthropic Foundation
Harold Plotnek Charitable
Foundation
Home Builders Care
Foundation, LLC
The J. Willard and Alice S.
Marriott Foundation
Jim and Carol Trawick
Foundation
Keker Family Foundation
The Morris and Gwendolyn
Cafritz Foundation
The Selective Group Foundation
Stellar Solutions Foundation
Taconic Foundation, Inc.
TD Charitable Foundation
Venable Foundation, Inc.
The Wolf Family Charitable Trust

Government

City of Gaithersburg
City of Rockville
Housing Opportunities
Commission of Montgomery
County, MD
Maryland Department of Human
Resources
Maryland Emergency Food
Program
Maryland-National Capital Park
and Planning Commission
Montgomery County
Department of Corrections and
Rehabilitation

Montgomery County Department
of Health and Human Services
Montgomery County Department
of Housing and Community
Affairs
National Institute of Standards
and Technology's Baldrige
National Quality Program
U.S. Department of Housing and
Urban Development

Schools

Charles E. Smith Jewish Day
School
The Foundation School of
Montgomery County
Jewish Community Center of
Greater Washington Preschool
Parkland Magnet Middle School
for Aerospace Technology
Somerset Elementary School

Other Organizations

Alpha Omicron Pi Suburban
Maryland Alumnae Chapter
GFWC The Wednesday Club of
Sandy Spring
Interfaith Families Project of
Greater Washington
KidzCare USA, Inc.
Mental Health Association of
Montgomery County
National Alliance to End
Homelessness
Puerto Rico Study Group, Inc.
Shepherd's Table
United Way of the National
Capital Area

Individuals

\$10,000 - \$24,999

Anonymous

\$5,000 - \$9,999

Clifford and Debbie White

\$2,500 - \$4,999

Gary and Carol Berman
Martha Brockway
Laura and Guy Cecala
Ellen and Jackson Coppley
Michael and Deborah Dobson
Carolyn Lichtenstein
Jim and Ellen Myerberg
David and Kathie Weinberg

\$1,000 - \$2,499

David and Deborah Astrove
Steven and Michelle Bosch
Karen Britto
Robert and Elizabeth Carlin
Sandra Champion
Beth and Kenneth Corbin
Tamara Darvish
Deborah Diroll
John and Martha Evans
Robert Feinberg
Carl H. Gunderson
Todd and Elizabeth Harrison
Melissa Hayes-Gehrke
Elizabeth Homan
Steven Linscheid
Dan and Reedy Mahoney
Thomas and Linda McCabe
Maria Teresa Meyer
Louisa Nickerson
Nanci Porten and Paul Gutermann
William and Donna Roberts
Ian Spatz and Karen Orlansky
Corinne Stevens and Aston Irving
Frank Strong
Edgar and Mary Taplin
Laurian J. Unnevehr
Hans Wyss

\$500 - \$999

Anonymous
William H. Agnew

Elena A. Alvarez
James Berry and Hali Edison
Maurice Bolmer
Michael and Elizabeth Brunner
Karen Clegg
John and Nia Cresham
Debbie Driesman and Frank Islam
Amanda Edens
Debra and Robert Ekman
Sam Fleming
Laurene Gallo
Miriam Galston
Daniel M. Gray
James Clifford Haight
Clifford Hall
Nancy W. Harding
Leon and Dawn Harris
Barbara Heller
Theresa Herman
Robert Jambou and Diana June Blalock
L. Frances Jansen
Charles and Patricia Kengla
Sheila Kessinger
Joseph Kolar and Kathy Sullivan Kolar
Mary Lambert
Isiah and Catherine Leggett
Stephen Lofgren
Sharan and Howard London
Pamela Loprest and Hugh Courtney
Solange MacArthur
Stephen Martin
Marshall and Marilyn Mazer
Jean E. McKeever
Ann Miller
Christian Mixer and Linna Barnes
Timothy Moore
John and Laura Moustakas
Larry and Lois Movshin
Phyllis Nicholson
Barry W. Nishikawa
Emily Novick
Kelley O'Dell and Matthew Payne
Arthur Parsons and Linda Berman
Laurence Platt and Elizabeth Clare Herington

Joan C. Pollitt
Herman and Gina Porten
Marvin and June Rogul
Katherine Rumbaugh
Leonard and Celia Schuchman
Jessica Slater
Matthew Slater and Faith Roessel
Bernard Slosberg and Mary Chor
Janice Soreth
Eric and Kimberly Stefan
William and Joan Sweet
James and Andrea Virga
Brian Wilbon
Ann Wild
Scott and Emily Yinger

\$100 - \$499

David Abe
Andrew and Christine Abrams
Margaret Adamo
Robert and Miriam Adelstein
Olga Aigner
Allan and Janet Akman
Gordon and Jane Allen
John Allen
Christa Allred
Richard Alper and Kate Herrod
Sharon P. Alsop
Fred and Helen Altman
Matthew J. Amann
Daniel Anderson
Anne Andrew
Dominic and Judith Antonelli
Panthip Arnold
Annella J. Auer
Penney Baile
Arden and Ellen Baker
Stephen and Kate Baldwin
Stanley and Shelley Balis
Kim Ball
Alan Banov
Joan Barron and Paul Lang
Raymond Bass
Pamela Bates
Robert Bayer
James N. Beall
Daniel Becker and Martha Toll
Donald and Deborah Beers
Mira Bengen
Paul Bennett and Carol Herndon
George Bergdolt
Alan and Carol Bergstein
Paul and Susan Berman
Margaret and John Bessette
Eric Biel and Dana Rosenfeld
Betteann Bierwirth and Wendy Bierwirth
Elaine and Richard Binder
Warren Black
Robert and Margaret Blair
Deborah Bloch and Steven Jawetz
Ray Boedecker
Ronald Boisvert
Eric Bolin
Robert and Cynthia Bonsib
Robert Borochoff
Robert and Margaret Bourg
Margaret Boverman
George Bowden
Robert and Francie Brady
Kenneth M. Broderick
Sandra Brown
Shelley Brown
Michael and Judith Bucci
Leonard and Frances Burka
Geoffrey L. Burkhart
Michael and Jayne Burns
Boyd and Marcella Burris
Jacob Busch
Gregory and Patricia Campbell
Ronald Cantrell
Crystal Carr
Hugh Carroll
Judy Temple Carter
Molly Carter
Randall and Jean Caswell
Ted Chamberlain
Michael Chernick
David and Caroline Cherry
Wallace and Edith Ching
Sarah E. Churchill
Ruth Cipolla
John and Colleen Clark
W. E. Clark III
Dorothy A. Cockrell
Kenneth J. Coffey
Avery and Deborah Comarow
D. Faye Conley
Holly and Ward Cooper
Howard and Nancy Cooper
Karen Cordry
Sara S. Cortes
Chuck Covell
Brian M. Cox
Louise K. Crane
Charles and Jean Croner
Brian and Joan Crowe
Mary Curran
Madelyn E. Curtin
J. C. and Barbara Davies
Cindy Davis
Lulu Delacre
Marvin and Lois Dicker
John and Betty Diggs
Thomas Di Iaconi
Gloria Dillon
Thomas Dimond and Joan Ebzery
Charles Diss
Alice Dixon
John Driscoll
David Dugoff and Victoria Bor
Jonina Duker
Kevin Dwyer
Robert and Mary Eager
William Eckroade
Ruth Edelman
Ulf Ekernas
George T. English Jr.
Steven Epstein
Suzanne L. Epstein
John and Elizabeth Erickson
Steven and Nan Ernst
Carla Evans
Gretchen Ewers





Josephine Farwell
 Elliot J. Feldman
 Kenneth and Lois Fischbeck
 Joan Fishbein
 Mary Wight Fleming
 John and Lydia Foley
 R. Scott and Gail Fosler
 Carl Frandsen
 Jeffrey and Inga Frank
 Jack Frankel
 Alice Franks
 Verrick and Patricia French
 Jerry Friedman
 Judith Furash
 Barbara Garlock
 Elizabeth M. Garretson
 Anne Gavin
 Letty Gebreyohannes
 Lisa S. Gelb
 Barbara F. Gentile
 Michael C. Giaquinto
 Elaine S. Gibson
 Carol Gilbert
 Mary Giles
 Barbara Gill
 Judith W. Gilmore
 Laurel Glassman and William Neff
 George and Diane Gleason
 Lawrence A. Glick
 Anne Goldman
 Margorie Goldman
 William and Linda Goldman
 Jeffrey Gonyo
 Mary T. Goodson
 Elissa Gordon
 William and Gail Gorham
 Jamie Grabner

Aaron Greenberg
 Linda and Lenny Greenberg
 Michael and Sybil Greenhut
 Jerry and Jean Greenspan
 Benjamin Greenspoon
 Sandra Gresham
 Mark E. Griffin
 G. Griffith and Emily Lindsay
 Kathleen Griffith
 Cindy and Charles Griffiths
 David and Brooke Gross
 Bruce and Sue Guenther
 Regina Hablutzel
 Penda D. Hair
 Bonnie Hammerschlag
 Janet Hardy
 Brian Harris and Lauren Harris-Kojetin
 Joyce Harvard
 Patricia Harvey
 Diana Haskell
 Thomas Haslinger
 Frank and Lauren Hatten
 Judith Hautala
 Tom Heavner
 Lisa Henderson
 Tamar Henkin and Michael Rae
 Joan A. Henry
 Stu Hershey
 Michael and Kimberly Hicks
 Scott G. Hoburg
 Lisa Hochheiser
 Jean Hochron
 Robert and Barbara Hoffman
 Kathleen Holcombe
 Stephen Holland
 Bernard M. Hollander
 Barbara and Kenneth Homon

Judy Honig
 Robert Horacek and Zenora Khan
 Amy Horton-Newell and Craig Newell
 David and Catherine Hostetler
 Kent Hughes
 Adele and Loraine Hutchins
 Gabriel Hutter and Jennifer Ruark
 Kyoko Ikari
 John P. Irely, D.D.S.
 Cathleen Irish
 Larry H. Israel
 Eva Jacobs
 Diane Jacobsohn
 Anne Hale Johnson
 Gordon and Cynthia Johnston
 David and Susan Jones
 Kuriacose and Tara Joseph
 Jane Josephs
 Marc and Jeanie Kahn
 Robert Kaplan
 John and Diane Karlik
 Barbara A. Kaufmann
 Helen Kavanagh
 Benjamin Kedem
 Catherine Kelly
 Wilton and Joan Kennedy
 Jerry Kickenson
 Marjorie Klein
 Walker Klinger
 John Knowlton
 Robert Koenick
 Jeffrey and Sondra Komarow
 Joy Kosman
 Daniel and Julie Krakower
 A. J. Kramer
 Mary Jo Kraus
 Saul Kravitz
 Cheryl Kreiser
 Hanns Kuttner and Rebecca Blank
 Ruth Lammert-Reeves
 Neil and Ellen Lang
 Roger W. Langsdorf
 David LaRoche
 Michael and Rebecca Layous
 Michelle Lazerow
 Marty Lederman and Lauren Rothfarb
 C. S. Ledley
 Walter Leginski
 Jim and Francine Leinbach
 Leroy and Elizabeth Leon
 Alan and Agnes Leshner
 Karen Levenson
 Betty Levine
 Neil Levy and Linda Perle
 Alexander and Nancy Lewin
 Jo Ann Lewis

Peggy Lewis
 David R. Lide Jr.
 Ernst and Roberta Liebman
 Lewis Lloyd
 Dorothy and Milton London
 Cresenciano Lopez
 Stephen and Helen Low
 Alfred Luce
 Joan Lunney and William Idler
 Jean Lutterman
 Michael and Ronni Lux
 Jim and Shirley Lyles
 Barry W. Lynn
 Bobbie W. MacDonald
 Rosemary A. MacDonald
 Donald and Margaret MacGlashan
 John and Helen MacKenzie
 Mary Anne Mahin
 Mary E. Mahsetky
 Deborah Malkovich
 Robert and Shirley Mallalieu
 Marie Mann and Dianne Walsh
 Ellen Mansueto
 Robert L. Mapou
 Sidney Marantz
 Ryna B. Marinenko
 Fred Marinucci
 Serge Markov
 Emily Marti
 John and Lois Martin
 Charles and Anne Marie Martinez
 Clarice C. Mayers
 Kay E. McGoff
 Dan and Jacky McGroarty
 Philip McGuire and Susan Milligan
 Michael McKeever
 Robert and Patricia McNamara
 Carlos and Patricia Medeiros
 Ann Medinger and Sean Beeny
 Coryne Melton
 John Mentzell
 Edward and Anne Metcalf
 Anetta Kay Mettler
 Paul and Carol Meyer
 Jill Michaels
 Florence K. Millar
 Laurence W. Miller
 J. Kevin Mills
 Mitchell Mirviss
 Leonard and Eileen Mitchard
 William Mitchell
 Albert and Joan Modlin
 Wendall and Jo Ann Mohr
 Elizabeth T. Mooney
 David Morley
 Edward and Susan Morris
 Bruce Morrison
 Howard Moss and Betsy Roth

Bruce Moyer and Ruth Lampi
 Leo Mullen and Helene Patterson
 Alies Muskin and Alfred
 Rosenberger
 Molly Myers
 Beverly Nadel
 Irwin G. Newman
 Mary Nix
 Stephen E. Nordlinger
 Ernest Nussbaum
 Michael Oberdorfer
 W. L. O'Dell
 Dorothy B. O'Donnell
 William and Patricia O'Hare
 Michael D. Ohora
 Donna Okelly
 Ruth Orleans
 Peggy Orser
 David and Glenna Osnos
 Stephen and Claudine Ostrow
 Cindy and Robert Ostrowski
 Robert and Paula Ott
 Jeffrey F. Paniati
 David H. Pawlik
 Sol and Diane Pelavin
 Thomas Perez
 Peter Perl and Nina Shapiro-Perl
 Claire Peterson
 Joseph Petrillo
 Maria P. Peyser
 Hermina Pfeifer
 Dan Pierce
 Matthew Pinkus
 Martha Pleasure
 Richard G. Plihal and Victoria
 Diaz
 Laura Pompa
 Caroline Poplin
 Robert and Susan Post
 Beverly Potter
 Andrew Poulos
 Richard and Lynne Power
 Harold and Ellen Pskowski
 Arthur and Virginia Rabenhorst
 Vijay Ramchandani
 Roya Rashtchian
 Tessio Rebello
 John Redding
 Ingrid Richardson
 Thomas and Amanda Riddle
 Dave and Mary Jane Roberts
 William and Barbara Roberts
 John and Patricia Robinson
 Marcus Roder
 Linda Roeder
 George Roman and Alice Jacobs
 Margaret W. Root
 Lawrence and Judy Rosenblum
 Daniel Rosensweig
 Marge Rosensweig

Gerald and Claire Rupert
 Charles and Camilla Russell
 Patrick Ryan
 Thomas E. Ryan
 Lauree Sails
 Melinda Salzman
 Louis Samels
 Peggy Rae Sapienza
 John and Heather Satrom
 Terry Savage
 Gertrude G. Scanlan
 William Schaefer
 Richard Schaeffer
 Richard Schall
 Mary B. Schiffman
 Mark Schilling and Sahar
 Dawisha
 Robert Schmitz and Gale Held
 Imogene Schneider
 Jim and Monica Schoettler
 Laurence and Susan Schor
 Lee Schwab
 Nancy and David Scull
 Andrea Sedlak
 Harold Segall and Lauren Gross
 John and Frieda Shama
 Ira and Nancy Shapiro
 Charles and Lora Sheridan
 Jerry and Cathy Shier
 Chuck and Christie Short
 Kersi Shroff
 Fred and Rhonda Shulman
 Mohammad Siddique
 Stanley and Bena Siegel
 Mary Ellen Signorille
 Damon Silvers and Elissa
 McBride
 Katherine R. Simpson
 Douglas and Vita Sims
 Thomas and Karen Sinderson
 Richard and Sarah Skillman
 Donald and Tina Slater
 Daniel Smith and Patricia Burns-
 Smith
 Paul and Janet Smith
 Alice P. Stewart
 John I. Stewart and Sharon S.
 Stoliaroff, Ph.D.
 Margaret Stillman
 Joan and Peter Stogis
 Alan Strasser and Trisha Hartge
 Clifford Stromberg and Ava
 Feiner
 Bob and Laurie Sunshine
 Helen Sunshine
 John and Rauna Surr
 George and Nancy Sushinsky
 Edward and Jane Sutton
 Hildegard Sylla
 Charles and Lee Talisman

Joseph Tanis
 Priscilla Tapley
 Lawrence and Sandra Taub
 Virginia R. Tauss
 Howard and Pamela Taylor
 Len and Martha Taylor
 Phillipa Taylor
 Richard and Patricia Taylor
 Dianne Thoburn
 Paul and Lauren Thomas
 John and Lisa Thompson
 Michael and Maureen Tomasulo
 Thelma Triche and Thomas
 Calhoun
 Robert and Laurie Trippett
 Robert and Nancy Turner
 Laurence and Patti Twigg
 Josh and Jen Udler
 Lynne Valcourt and Millard
 Arbutina Jr.
 Gino and Louise Valenti
 Thomas and Lillian Vander Male
 Debbie Veliz
 Erin Vespe
 Dion Vinik
 John and Lilya Wagner
 Lukas Wagner and Catherine
 Palazzolo
 Katharine Waldman
 Ronald and Patricia Walters
 Fred Walton
 Richard and Cynthia Warsh
 Karen Wassman
 Elizabeth Weibel
 Jane G. Weiman
 Amy G. Weinmann
 Mark and Deborah Weinstein
 Alex and Linda Wertheim
 Irma Lee Westrell
 Rebecca Williams
 Roger Williams and Virginia
 Macomber
 Frank Winfield
 Farrell C. Wise
 C. Lawrence Wiser
 Charles and Nancy Wolfson
 Anne and Thomas Wotring
 James and Harriet Wright
 Philip and Shirley Yaffee
 Laurie Yang
 George and Laura You
 Mark Young and Rachel Carren
 Ying-Ying Yuan
 Cathleen Zaret
 John Zinner
 Fred and Mary Jane Zusy
 Carl and Margaret Zwisle



MCCH appreciates all our volunteers and in-kind donors, including those who deliver meals to Home Builders Care Assessment Center (our men's emergency shelter); donate gifts during the holidays; participate in school donation drives; complete landscaping projects; volunteer at events and in the office; and much more! For a list of FY11 in-kind donors and volunteers, visit our website, www.mcch.net, and click on How to Help.

Board of Directors & Staff (as of June 30, 2011)

Board

Amy Williard, Chair
The Monitor Group, LLC
Laura Cecala, Vice Chair
Inside Mortgage Finance
Publications, Inc.
Jean Hochron, Secretary
Montgomery County
Department of
Health and Human Services
John Cresham, Treasurer
Freddie Mac

April Asare
Community Member
Ellen K. Copley
Ellington Fund
Chuck Covell
Covell Communities, LLC
Craig England
England & Company
Marty Evans
Bechtel National, Inc.

Elizabeth Homan
Montgomery College
Amy Horton-Newell
American Bar Association
Dick Pettit
Pettit Companies
Bobbie Hart Wolf
Community Member

Affiliations are included for
identification purposes only.

Senior Staff

Julie Maltzman, Interim Executive Director
Diane Aten, Director of Development and Communications
John Enagonio, Director of Real Estate, Coalition Homes, Inc.
Joanne Lam, Controller

Darrell Butler, Program Director, Home Builders Care Assessment Center
Anne Donohue, Program Director, Cordell Place
Alice Forcier, Program Director, Seneca Heights Apartments and Home First
Chandra Harris-Jackson, Program Director, Partnership for Permanent Housing
Nili Soni, Program Director, Safe Havens, Creative Housing Initiative Pilot Project, and Hope Housing



600-B East Gude Drive • Rockville, MD 20850
301.217.0314 • 301.217.0824 (fax)
www.mcch.net