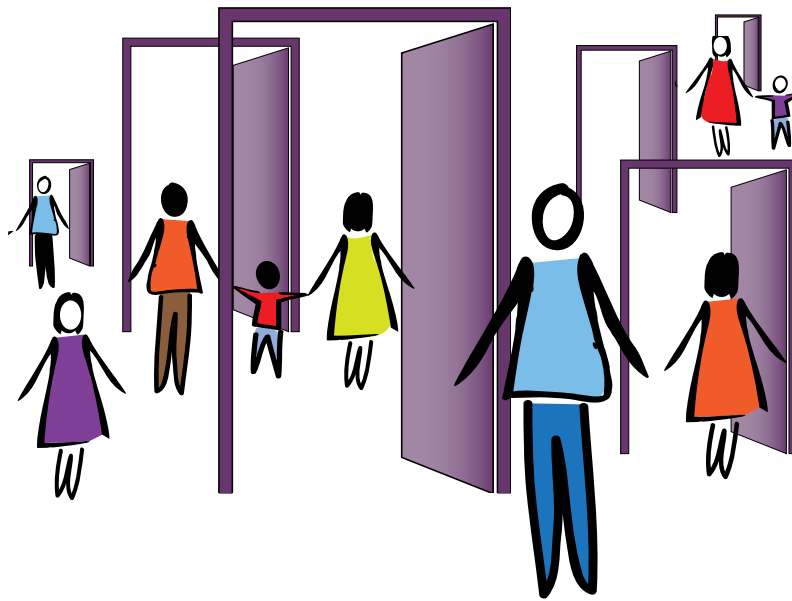


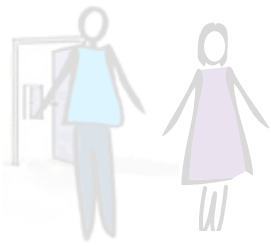
OPENING DOORS



2012 ANNUAL REPORT

MONTGOMERY COUNTY COALITION FOR THE HOMELESS



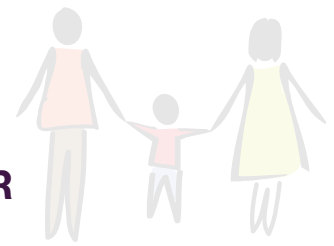


MONTGOMERY COUNTY COALITION FOR THE HOMELESS

Table of Contents

Letter from Board Chair & Executive Director	2
Opening Doors:	
Who We Are	3
What We Do	4
How We Do It	8
Joining With Community Partners	11
Summary of FY12 Revenue & Expenses	13
FY12 Donors & Supporters	14
Board of Directors & Staff	Back Cover





LETTER FROM BOARD CHAIR AND EXECUTIVE DIRECTOR

Dear Friends,

“Opening Doors” was MCCH’s theme for fiscal year 2012. It embodied our continued commitment to opening doors to housing and services for people who are homeless, as well as to creating new opportunities, vital community partnerships, and program best practices.

In FY12, we opened doors to serve 1,540 men, women, and children. We enhanced our capacity to serve people in need by improving the coordination of case management and medical care. We deepened our clients’ connection to community resources. Six new doors were opened to formerly homeless families in our Partnership for Permanent Housing program when MCCH’s affiliate Coalition Homes added these new homes to its property portfolio.

At MCCH we take evaluation, constant improvement, and the ability to communicate about results very seriously. This is our first opportunity to have a full year’s worth of data from our revised organizational outcomes, and we are very pleased to showcase our results. These new common outcomes enable us to track results across multiple programs, including new categories that measure the length of time households (individuals and families) maintain housing stability at various intervals. We think you’ll be amazed to read about how, with your help, we kept those doors open and available for so many people.

We also opened the door to a new era at MCCH with the formation of a new executive leadership team focused on coordinating critical functions, enhancing our strategic vision, and achieving excellent outcomes. Our future is bright thanks to supporters like you who understand how important this work is and who take steps with us—through opening doors—to end homelessness in our community.

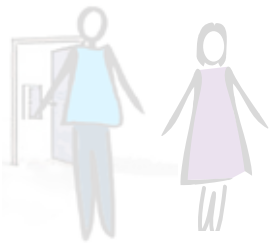
Warmly,

Amy Williard
Chair, Board of Directors



Susie Sinclair-Smith
Executive Director





OPENING DOORS: WHO WE ARE

Our Mission

Montgomery County Coalition for the Homeless (MCCH) leads the effort to end homelessness in our community by creating housing options combined with supportive services and facilitating collaboration, education, and advocacy based on the belief that every person is entitled to the dignity of a home.

Our Work

MCCH not only serves the most vulnerable people in our community, we also lead efforts to actually end homelessness with a two-pronged approach.

Housing and Supportive Services

MCCH has created a spectrum of high-quality housing, shelter, and supportive services for people experiencing homelessness and those who are formerly homeless. This includes six permanent housing programs—Cordell Place, Creative Housing Initiative Pilot Project, Home First, Hope Housing, Partnership for Permanent Housing, and Seneca Heights Apartments—as well as Safe Havens housing and emergency shelter for men at Home Builders Care Assessment Center. Coalition Homes, our affiliate agency, also provides permanent housing.

Community Education and Advocacy

Advocacy and public education are an integral part of MCCH's foundation and our past and present activities. MCCH raises awareness of homelessness throughout the community. We are proud to advocate alongside a wide range of community partners for needed resources and for solutions to homelessness. In particular, MCCH advances the implementation of strategies aligned with Opening Doors: Federal Strategic Plan to Prevent and End Homelessness.

Who Did We Help in FY12?

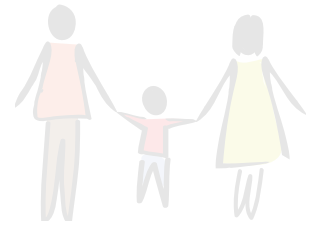
MCCH served 1,540 homeless and formerly homeless men, women, and children in FY12. This included 163 families (316 children and 193 adults in families) and 1,031 individual adults. MCCH provided:

- 163 families and 240 individuals with permanent housing.
- 748 homeless men with emergency shelter.
- 43 individuals with Safe Havens housing.

In FY12, over 7,800 people in Montgomery County learned about homelessness and its solutions from MCCH.

Attendees at our Silver Spring Help the Homeless Community Walk.





OPENING DOORS: WHAT WE DO

MCCH programs combine housing and supportive services. Through its permanent housing, Safe Havens housing, and emergency shelter, MCCH serves the unique needs of homeless and formerly homeless individuals and families in our community.

Did You Know?

In FY12, MCCH operated 386 units of permanent housing, 40 units of Safe Havens housing, and 236 units of emergency shelter.

We Provide the Dignity of a Home

Permanent housing is the bedrock of MCCH—we believe that everyone deserves the dignity of a home. Most of our programs provide permanent housing for individuals or families. Many years of research, collaboration, and service delivery mean that we know what works. People need permanent homes and many require supportive services tailored to their individual needs to maintain their housing stability. We believe in the best practice service model of “housing first.” Of the people in our permanent housing programs in FY12, 240 were individual adults. We also housed 163 families that included 316 children and 193 adults.

What is “housing first”?

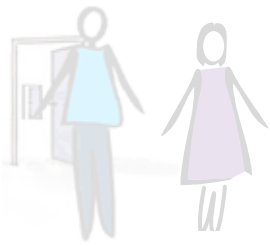
Housing First is an approach to ending homelessness that centers on providing homeless individuals with housing as quickly as possible and then providing services as needed.



Sherry's Story

Sherry and her seven children became homeless after she was repeatedly victimized by the father of her three youngest children. They moved around to live with family members, but overcrowding or the threat of violence by Sherry's abuser always forced them to leave. Sherry sought help at a local domestic violence shelter and was referred to our Partnership for Permanent Housing program in 2007.

Sherry now works part-time in retail while taking care of her large family. Sherry's oldest daughter is the first person in her family to graduate from high school and college. She is working as a pastry chef with plans to return to school and eventually open a restaurant. Sherry's oldest son graduated from high school this year and was awarded a full athletic scholarship to play lacrosse in college. Sherry is proud and thankful that she could provide a stable home for her children to achieve their dreams.



OPENING DOORS: WHAT WE DO

We Move People into More Stable Housing

Keeping the doors open to more stable housing is another part of our work. MCCH operates emergency shelter for homeless men and Safe Havens housing for our most vulnerable homeless clients. We are proud that these programs provide more than just shelter—they provide the vital opportunities and connections that people need to move into more stable housing. At Home Builders Care Assessment Center (HBCAC), our emergency shelter for men, clients are connected to supportive services so that they will be able to take that next step and move on. During fiscal year 2012, 178 men—24% of HBCAC clients—moved into more stable housing. In our Safe Havens housing for mentally ill men and women, case managers work with this vulnerable population, providing the necessary support for clients to progress at their own pace with the ultimate goal of moving into permanent supportive housing. In FY12, eight people—19% of Safe Havens clients—moved on to more permanent supportive housing, which is an incredible accomplishment for this population.



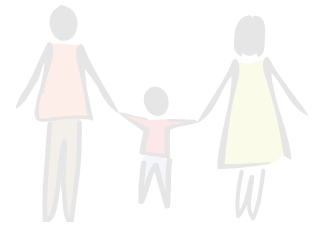
Richard Nelson, director of Montgomery County Department of Housing and Community Affairs, presents a housewarming gift to a resident at Coalition Homes' celebration event in Silver Spring.



Sam's Story

Sam lost everything—all of his possessions, his wife, and custody of his daughter—when addiction and clinical depression sent him into a downward spiral. He ended up at our HBCAC men's emergency shelter. It took Sam a while before he was ready to start rebuilding his life; we didn't give up on him and he eventually moved into one of MCCH's permanent housing programs, Home First.

Today Sam is back in control of his life and has even reunited with his now grown daughter in Florida, where he is helping her through her own difficult situation. Sam couldn't be more grateful for MCCH's support as he lives a stable life again.



OPENING DOORS: WHAT WE DO

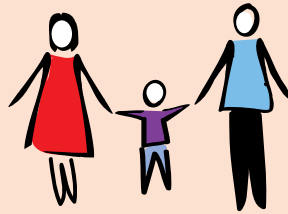
We Help People Maintain Housing

We don't just focus on moving people into more stable and permanent housing. We want MCCH clients to maintain their housing. Our improved organizational outcomes, which enable us to track results across multiple programs, include new categories that measure the length of time households (individuals and families) maintain housing stability at various intervals. In our permanent housing programs, 95% of households—381 individuals and families—maintained stable housing in FY12! We are proud that we kept these doors to housing open.

We Help People Achieve Their Goals

We know that people need individualized support to reach their goals and maintain stable housing. Our skilled case managers work hard to connect clients to resources and any necessary treatment. Our client-centered approach yields positive results.

In FY12, Of the adults in our permanent housing programs:



26%

were enrolled in educational or vocational training programs.

38%

acquired or maintained employment.

86%

were referred to and utilized community resources.

47%

regularly accessed mental health or substance abuse treatment.

Of the men who received case management at our HBCAC men's emergency shelter:



26%

were referred to and utilized community resources.

47%

were enrolled in an educational or vocational training program.

87%

regularly accessed mental health or substance abuse treatment.

Of our Safe Havens residents:

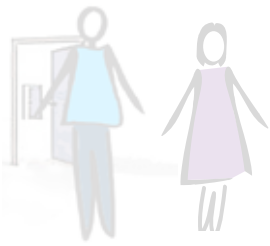


98%

regularly accessed mental health or substance abuse treatment.

100%

were referred to and utilized community resources.



OPENING DOORS: WHAT WE DO

Public Education and Advocacy

Alongside our direct services, MCCH is a leader in advocacy and public education around issues related to homelessness, including housing, food security, health care, and employment. MCCH collaborates with a range of community partners to obtain needed resources and is a founding member of the Safety Net Coalition.

We focus on the creation of political and social will within our community to provide long-term solutions to the problem of homelessness. MCCH is sought after for presentations on the impact of homelessness and for resources describing how people can make a difference. We also host conferences and educational meetings on best practices for service delivery. As a highly-regarded service provider, MCCH is afforded opportunities to testify before and meet with elected officials about our work and the needs of the people we serve, and our employees serve on all of the critical homelessness-related committees in the county.



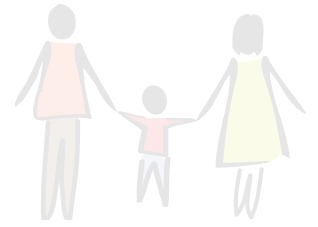
Coalition Homes Director of Real Estate, John Enagonio.



Sandra's Story

Sandra had struggled with substance abuse since she was young. After her mother died in 1992, Sandra became homeless, sleeping wherever she could, with very little family contact. A few years ago, a conversation with several of her grandchildren made her realize that she was missing out on so much of life. Sandra entered an inpatient treatment program, followed by other programs, and she finally found permanent supportive housing with CHIPP.

Reconnected with her family, she says that “my grandkids are so happy to be with me at my own place for dinner and a movie.” Her children are very proud of her and took her on a vacation last year for her birthday. Sandra is a skilled organizer and helps her friends and family with projects. She is learning to drive. Sandra is also writing poetry and plans to enroll in writing classes. Permanent housing, combined with ongoing supportive services, allowed Sandra to start anew — she has been housed for almost two years and has maintained her sobriety for over three years.



OPENING DOORS: HOW WE DO IT

Permanent Housing

Cordell Place

Cordell Place provides permanent housing to 32 formerly homeless individual adults in downtown Bethesda. Similar to most of our other programs and designed to help residents live as independently as possible, Cordell Place requires residents to sign a one-year lease and pay 30% of their income as rent. Case managers work with the residents on various independent living skills, including goal setting, budgeting, and accessing community resources. Cordell Place is one of the first Personal Living Quarters housing models in the county.

Creative Housing Initiative Pilot Project

The Creative Housing Initiative Pilot Project (CHIPP) is permanent housing for low-income individual adults who were frequent users of the emergency medical and corrections systems and who often suffer from multiple disabilities. Sixteen residents work with a case manager to achieve and maintain housing stability with vital supportive services that are tailored to their individual needs.



Home First

Home First provides permanent supportive housing for 30 formerly chronically homeless individual adults. Residents live in apartments or houses and receive psychiatric rehabilitation and other individualized wraparound supportive services and case management.

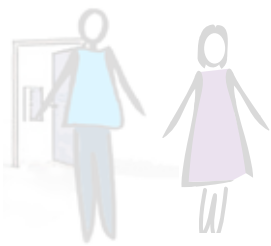


Hope Housing

Hope Housing provides permanent supportive housing and case management to 40 formerly homeless individual adults and two families with disabilities. Each family resides in a single-family home and the individuals live among eight shared houses. Hope Housing is a partnership between MCCH and two other community-based organizations.

Seneca Heights Apartments

Forty individual adults are permanently housed and 17 families with children are permanently housed at Seneca Heights Apartments (SHA)—2012 was the last year that the families were served in a transitional housing model. All residents are offered supportive services in a community environment. All residents receive case management and social services, and there are many opportunities to engage in community activities, including an active tenant council and a weekly coffee club.



OPENING DOORS: HOW WE DO IT

Permanent Housing



Partnership for Permanent Housing

Partnership for Permanent Housing (PPH) combines home-based case management with quicker access to permanent housing for families and individual adults. PPH serves over 170 households in scattered sites across the community. It is the county's original "Housing First" program.

Keeping the Doors Open: PPH Serving Six New Families

In 2012, PPH reached more families with the opening of New Takoma Homes, a project of MCCH affiliate Coalition Homes. Coalition Homes purchased and renovated two buildings from the disbanded Silver Spring Interfaith Housing Coalition. Six formerly homeless families with a combined total of 10 children now live in these new apartments and receive case management. These housing units would have disappeared from our community's stock of permanent housing had Coalition Homes and MCCH not stepped in.

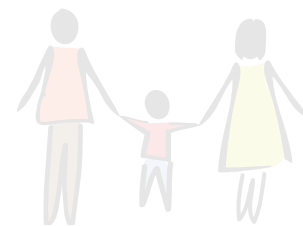
Children at MCCH

MCCH is committed to the well-being of children and youth in our programs. In FY12, we served 316 children in families through two of our programs, Partnership for Permanent Housing (PPH) and Seneca Heights Apartments (SHA).

Case managers in both programs encourage parental involvement and partnerships with educators and school officials, and they routinely discuss academic achievements and challenges with the families. At SHA, infants and toddlers are enrolled in a local Head Start program and students participate in an on-site homework club. In PPH, eight youth graduated from high school during FY12, with six bound for college.



OPENING DOORS: HOW WE DO IT



Emergency Shelter

The Home Builders Care Assessment Center (HBCAC) men's emergency shelter offers more than beds, showers, and dinner for men coming off the streets. Clients can also find a variety of supportive services, including case management and medical care, with the long-term goal of connecting to available resources and more stable housing. The on-site Back-to-Work program provides job training and vocational counseling. In FY12, HBCAC provided over 37,000 nights of shelter to 748 men.

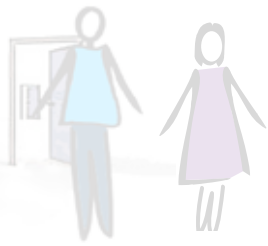
Safe Havens Housing

Safe Havens provides housing with intensive supportive services to homeless adults with severe mental illness, often deemed the most difficult to serve. With the support of skilled case managers, clients move at their own pace with the ultimate goal of moving into permanent supportive housing. Safe Havens serves 40 people at a time and provides access to case management, counseling, life skills development, 24/7 staff, and on-site psychiatric services among four shared living facilities.



Enhancing Services Inside Our Doors

At the HBCAC men's emergency shelter, we restructured the delivery of case management and medical care and deepened our clients' connection to community resources.



OPENING DOORS: JOINING WITH COMMUNITY PARTNERS

Community involvement and outreach are vital to our work to end homelessness in Montgomery County. MCCH forges and develops partnerships with a wide range of community members who stand behind our belief that all persons are entitled to the dignity of a home.

Corporate Partners

In FY12, MCCH initiated our successful Corporate Partnerships program with businesses from the community. Corporate Partners design their own relationship with MCCH, and activities may include sponsoring families and individuals in our programs, completing yard and other site maintenance, holding donation drives, and sponsoring events.

Volunteers

A record 2,248 individuals volunteered for MCCH in FY12—a 13% increase from the previous year! MCCH volunteers brought their special skills and enthusiasm to our wide variety of volunteer opportunities. Office volunteers tracked donations to fulfill program needs, assisted with public affairs, and researched grant opportunities. Our ability to react to program needs improved thanks to groups being on call for emergent projects.



Sandy Spring Bank joins with MCCH for their Help the Homeless Walk.

In-Kind Support

Our generous in-kind donors provided individuals and families in our programs with necessary essentials, including backpacks filled through back-to-school supply drives. Volunteers also generously fulfilled many holiday wish lists for our clients. Our vibrant meal program continued to grow with 81,656 meals donated—a 5% increase over FY11.

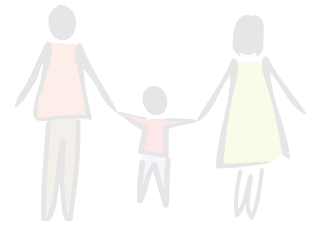
Education

As part of our mission, we educate the community and raise awareness of homelessness. Over 7,800 people representing more than 80 community groups, including schools, congregations, nonprofits, businesses, and other groups, learned about homelessness through MCCH's educational presentations. As part of Fannie Mae's Help the Homeless Program, 33 community groups held Community Walks with MCCH to raise awareness.

The JBG Cares Committee hosted a pizza party at our HBCAC men's emergency shelter. They also fulfilled the wish lists of all 32 residents at Cordell Place, supplied holiday decorations, and catered a holiday party.



OPENING DOORS: JOINING WITH COMMUNITY PARTNERS



At our Celebrating Partnerships: Opening Doors Gala 2012 Gala, La Toya Ormsby accepted the distinguished volunteer award on behalf of Gaithersburg-based Church of the Redeemer for their continued volunteer service.

Events

On March 1, 2012, more than 200 distinguished guests attended Celebrating Partnerships: Opening Doors 2012 Gala. Our belief that everyone is entitled to the dignity of a home and the importance of opening doors for those in need of housing was reflected throughout this annual event. We honored community partners Church of the Redeemer and The Community Foundation for Montgomery County and county employees Uma Ahluwalia and Richard Nelson for their invaluable contributions toward ending homelessness in Montgomery County.

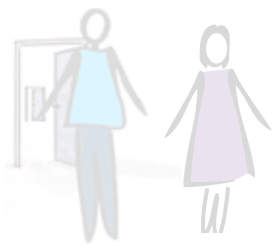
On May 1, 2012, our annual Shelter Walk 'n Roll kicked off Help the Homeless season. Community members gathered to increase awareness of homelessness and to raise funds for our programs, while enjoying live music, games, face painting, and a two-mile walk around Rockville Town Square.



County government employees Uma Ahluwalia and Richard Nelson accepted the distinguished service award.

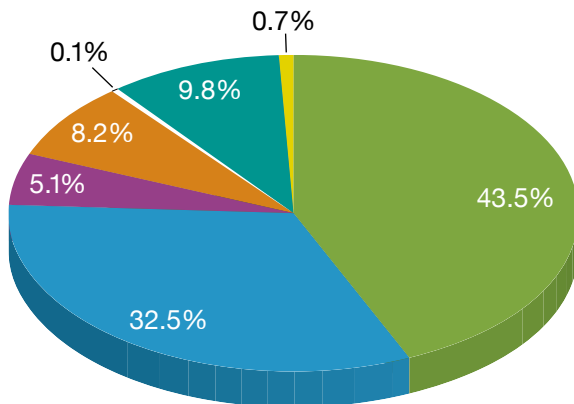


Shelter Walk 'n Roll supporter (far right) Guy Cecala with fellow attendees.



OPENING DOORS: 2012 SUMMARY OF REVENUE AND EXPENSES

2012 Revenue



Government Grants and Contracts

(\$7,242,863)

Local	\$4,140,748
State	\$6,000
Federal	\$3,096,115

Private Donations

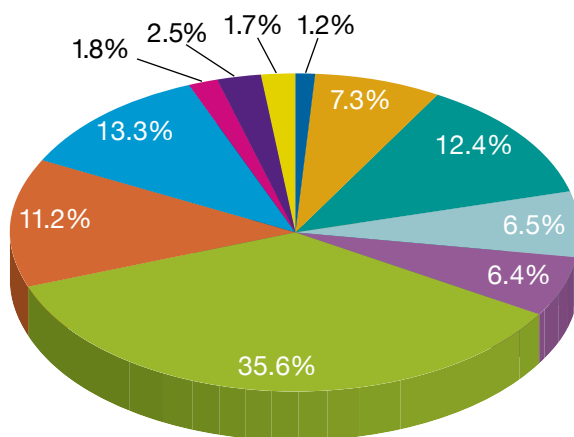
(\$487,807)

Individuals	\$152,723
Events	\$220,210
Other Orgs.	\$114,874

Foundation Grants	\$784,314
Program Income	\$936,250
Interest & Other Income	\$69,708

Total Revenue \$9,520,942

2012 Expenses



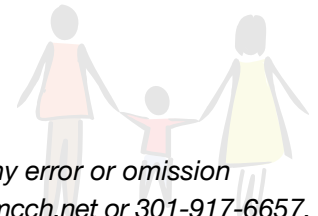
CHIPP (1.2%)	\$113,946
Cordell (7.3%)	\$675,945
HBCAC (12.4%)	\$1,144,742
Home First (6.5%)	\$601,887
Hope Housing (6.4%)	\$586,000
PPH (35.6%)	\$3,280,342
Safe Havens (13.3%)	\$1,222,133
Seneca Heights (11.2%)	\$1,036,639
Fund Raising (1.7%)	\$154,557
Public Affairs (2.5%)	\$231,457
General & Admin. (1.8%)	\$168,700

Total Expenses \$9,216,348

* The financial statements for Montgomery County Coalition for the Homeless were audited by an independent auditor and are available in their entirety at the MCCH administrative offices.

** Approximately \$1,425,000 of in-kind income and expenses are not included in these figures.

OPENING DOORS: FY12 DONORS AND SUPPORTERS



This list comprises cumulative giving between July 1, 2011 and June 30, 2012. We regret any error or omission and ask that corrections be brought to our attention. Please contact Andrea Nesby at anesby@mcch.net or 301-917-6657.

Community Groups

Farmland Families
Interfaith Committee for the
Homeless and Working Poor
Laytonville Lions Club

Congregations

Ashton United Methodist
Church, Ashton
Bethesda Jewish Congregation,
Bethesda
B'nai Israel Congregation,
Rockville
Church of the Redeemer,
Gaithersburg
Church of the Resurrection,
Burtonsville
Colesville Presbyterian Church,
Silver Spring
Damascus United Methodist Church
– Harwood House, Damascus
Faith United Methodist Church,
Rockville
Faith United Methodist Church –
Missions Committee, Rockville
Global Mission Church of Greater
Washington, Silver Spring
Good Shepherd United Methodist
Church, Silver Spring
Greenridge Baptist Church,
Clarksburg
Heritage Christian Church,
Wheaton
The Inter-Faith Chapel – Missions
Committee, Silver Spring
Millian Memorial United Methodist
Church, Rockville
New Hope Presbyterian Church,
Derwood
Our Lady of Grace Church,
Silver Spring
Saint Mark Presbyterian Church,
Rockville
Saint Matthew Presbyterian
Church, Silver Spring
Sligo Seventh-day Adventist
Church, Takoma Park
St. Francis Episcopal Church,
Potomac
St. Francis Episcopal Church –
Women of St. Francis, Potomac
St. Francis of Assisi Catholic
Church, Derwood
St. Patrick's Catholic Church,
Rockville
St. Paul United Methodist Church,
Laytonville
Trinity United Methodist Church,
Germantown
Unitarian Universalist Congregation
of Rockville, Rockville

Corporations

Ballard Spahr LLP
Bank of Georgetown
Bernitt Builders, Inc.
C.Fox Communications
Clark Construction Group, LLC
Costco Wholesale Corporation
Covell Communities
DARCARS Automotive Group
DIRECTV
Edgewood Management
Corporation
Enterprise Holdings, Inc.
Ernst & Young
Fannie Mae
First Potomac Realty Trust
Fisher BioServices
Inside Mortgage Finance
Publications, Inc.
Insurance Associates, Inc.
James G. Davis Construction
Corporation
The JBG Companies
J.M. Huber Corporation
KPL, Inc.
Linowes and Blocher LLP
Lockheed Martin Information
Systems & Global Solutions
McShea Residential Services
Michaels Title & Escrow, LLC
The Monitor Group, LLC
Monument Construction, Inc.
Milestone Plans, LLC
Pascal & Weiss, P.C.
Payless ShoeSource
Pepco
Pettit Companies
PNC Bank
Ralph J. Duffie, Inc.
Ratner Companies
RNSolutions, Inc.
Sandy Spring Bank
Shearman & Sterling LLP
Social Solutions International, Inc.
Statland & Katz, Ltd.
Terrapin Systems LLC
UnitedHealthcare
Urban Ventures, Inc.
The Ux Consulting Company, LLC
Washington Gas Company
Washington Property Company
Wiencek + Associates Architects
+ Planners, PC
Woori America Bank

Foundations

Anonymous
3M Foundation
The Community Foundation for
Montgomery County



Supporters John Low and Marie Henderson.

The Community Foundation for
the National Capital Region
Constellation Energy Group
Foundation, Inc.
Enterprise Holdings Foundation
Eugene and Agnes E. Meyer
Foundation
Freddie Mac Foundation
GE Foundation
GEICO Philanthropic Foundation
Home Builders Care
Foundation, Inc.
The J. Willard and Alice S. Marriott
Foundation
Jim and Carol Trawick Foundation
Lincoln Financial Foundation
Maryland Soccer Foundation
The Morris and Gwendolyn Cafritz
Foundation
Public Welfare Foundation
Sharing Montgomery Fund
Stellar Solutions Foundation
United Jewish Endowment Fund
Venable Foundation

Government

City of Gaithersburg
City of Rockville
Department of Health and Human
Services
Department of Housing and
Community Affairs
Housing Opportunities Commission
Maryland Department of Human
Resources
The Maryland-National Capital
Park and Planning Commission
U.S. Department of Housing and
Urban Development

Organizations

Financial Industry Regulatory
Authority
Institute of Real Estate
Management Chapter 92
Shepherd's Table
United Food and Commercial
Workers Union Local 400

United Way of the National
Capital Area
Verizon Telecom Pioneers AGB
Chapter #15
World Bank Community
Connections Fund

Schools

Charles E. Smith Jewish Day
School – Lower School
Georgetown Hill Early School
Montgomery College

Individuals and Family Foundations

\$5,000 - \$9,999

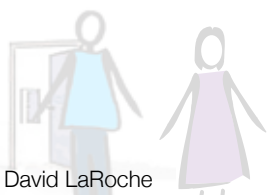
Laura and Guy Cecala
Clifford and Debbie White

\$2,500 - \$4,999

Patrick and Paula Clancy
Ellen and Jackson Coppley
Steven Linscheid
Susan Partovi

\$1,000 - \$2,499

David and Deborah Astrove
Gary and Carol Berman
John and Nia Cresham
Debbie Driesman and Frank Islam
John and Elizabeth Erickson
John and Martha Evans
Robert Feinberg
Michael and Eileen Fitzgerald
Donald Foley
Carl H. Gunderson
Leon and Dawn Harris
Todd and Elizabeth Harrison
Melissa Hayes-Gehrke
Al and Sandy Horowitz
Robyn Jones and DeRionne
Pollard
Keker Family Foundation
Sheila Kessinger
Joseph Kolar and Kathy Sullivan
Kolar
Tim and Dana Lake
Mary Lambert



OPENING DOORS: FY12 DONORS AND SUPPORTERS

David LaRoche
Dan and Reedy Mahoney
Thomas Martin
Dan and Jacky McGroarty
Peter McMahon and Dana Perino
Robert and Patricia McNamara
Maria Teresa Meyer
Barbara Michaluk
Jim and Ellen Myerberg
William and Donna Roberts
Howard Shapiro and Shirley Brandman
Susie Sinclair-Smith
Richard and Martha Strombotne
Frank Strong
Edgar and Mary Taplin
Bonnie Thomson and Eugene Tillman
Hans Wyss
Scott and Emily Yinger

\$500 - \$999

William H. Agnew
Christine Dorothy Berg
Maurice Bolmer
Marika Brown
Amelia and Scott Butera
Jeffrey and Kathleen Carey
Karen Clegg
John and Judy Darvish
Debra and Robert Ekman
Cynthia Esty and Bill Simon
Jay Foreman and Carol Tucker-Foreman
Jeffrey and Inga Frank
Laurel Glassman and William Neff
Larry and Carol Gordon
Patricia Hankins
Brian and Lauren Harris-Kojetin
Charnay Henderson
Terry and Mary Herndon
Elizabeth Homan
Robert Jambou and Diana June Blalock
L. Frances Jansen
Alexander and Hilary Joel
Kuriacose and Tara Joseph
Mary Jo Kraus
Ruth Lammert-Reeves
Isiah and Catherine Leggett
John and Michele Lewis

Griffith Lindsay
Sharan and Howard London
Pamela Loprest and Hugh Courtney
Philip McGuire and Susan Milligan
Bill and Coryne Melton
Gregory Metz
Scott Miller
Christian Mixter and Linna Barnes
Timothy Moore
Larry and Lois Movshin
Bridget and Fred Newton
Barry W. Nishikawa
Ernest Nussbaum
Laurence Platt and Elizabeth Clare Herington
Laura Pompa
Marvin and June Rogul
Yvette Sanchez Fuentes
Richard and Patricia Schaefer
Leonard and Celia Schuchman
Daniel and Sybil Silver
Matthew Slater and Faith Roessel
Bernard Slosberg and Mary Chor
Janice Soreth
Ian Spatz and Karen Orlansky
Michael Spencer
Virginia Sullivan
William and Joan Sweet
Bill and Maria Tayman
The Trapani Family
Joseph and Mary Ellen Vassallo
James and Andrea Virga
Karen Wassman
David and Kathie Weinberg
Christine Michele Wellons
Ann Wild
Stephen Williard
Bobbie and Tom Wolf

\$100 - \$499

Anonymous
Dick and Linda Abbott
Christine L. Abrams
Robert and Miriam Adelstein
Allan and Janet Akman
John Allen
Agnes Alvarez
Margot Anderson
Phil Andrews
Bruce and Elizabeth Angstadt

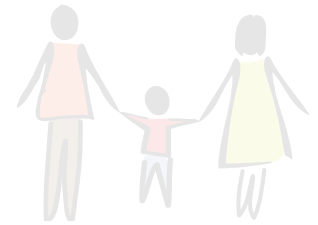
Judith Antonelli
Philip Armstrong
Panthip Arnold
Corwin and Virginia Atwood
Annella J. Auer
George Avery
Kristin Bacynski
Eleanor Baird
Arden and Ellen Baker
Diane L. Baker
Stephen and Kate Baldwin
Stanley and Shelley Balis
Alan Banov
Maria T. Barker
Andrew W. Barnes
Donalda Barnes
Beth Barnett
Christian Barnette
Thomas and Martha Bartley
Roberta Baruch and Jerome Ostrov
Pamela Bates
Daniel Becker and Martha Toll
Theodore Beresovski
George Bergdolt
Bob and Stephanie Bergwall
Jeffrey Harris Berman
Lahouaria Berrabah
Irving and Vivian Beyda
John Bickerman
Eric Biel and Dana Rosenfeld
Julie Black
Gloria Blackwell
Robert and Margaret Blair
Stephen and Karen Boliek
Eric Bolin
Daniel and Patricia Bonner
Robert and Cynthia Bonsib
Susan Boorse
Robert Borochoff
Robert and Margaret Bourg
Robert and Francie Brady
Wilma S. Braun
Karen Brinkmann
Karen Britto
Bruce and Deborah Broder
Shelley Brown
Allison Bryant
Michael and Judith Bucci
Leonard and Frances Burka
Geoffrey L. Burkhart
Michael and Jayne Burns
Boyd and Marcella Burris
Jacob Busch
Barbara Butrica and Alex Stricker
Anne and Francis Cantrel
Kelly Caplan
Suzanne Carbone
Robert and Elizabeth Carlin
Flavio Carsalade and Catherine Connor
Judy Temple Carter
Stephen Case and Margaret Ayres Case
Gilbert and Ada Casellas

Ted Chamberlain
Sandra Champion
Michael Chernick
David and Caroline Cherry
Wilsonia Cherry
Yinong Chong
Chris and Maria Christie
Ruth Cipolla
Mellie Cissel
W. E. Clark III
Dorothy A. Cockrell
Kenneth J. Coffey
Charles and Belinda Coleman
Avery and Deborah Comarow
Holly and Ward Cooper
Howard and Nancy Cooper
Sarah A. Corbett
Karen Cordry
Brian M. Cox
Austin Creel
Brian and Joan Crowe
Thomas Crowley
Madelyn E. Curtin
Tamara Darvish
Cynthia Davis
Eva DeGlopper
Sumon Dejavititert
Lulu Delacre
Douglas and Laura Denault
David Allen Denton
Marvin and Lois Dicker
John and Betty Diggs
Thomas Dimond and Joan Ebzery
Sharrill Dittman
Norman and Judith Doctor
Alan L. Dodd
D'ana Downing
Margaret J. Drury
David Dugoff and Victoria Bor
Jonina Duker
Douglas and Janet Dunlop
Robert and Mary Eager
John Eckenrode
Patricia A. Eden
David and Vivian Edfors
Allen Eisenberg and Constance Stromberg
Jonathan Elkind and Suzanne Mintz
Gary Emanuel and Sandra Jarrell
John Enagonio
Virginia M. Endicott
Anthony Epstein
Steven Epstein
Suzanne L. Epstein
Steven and Nan Ernst
Carla Evans
Tom Ewers
Josephine Farwell
Richard and Pamela Feinstein
Elliot J. Feldman
David and Jodi Fields
Joan Fishbein
Liliane Flogie and Steve Crawford
Alice Forcier
Eugene Ford



Board members Dick Pettit and Amy Williard at an MCCH benefit party.

OPENING DOORS: FY12 DONORS AND SUPPORTERS



Enterprise Holdings, Inc. fulfilled all of the holiday wish lists for the children at Seneca Heights Apartments.

R. Scott and Gail Fosler
 Ryan Francesca
 Jack Frankel
 David Frankfurter and Lisa Tillman
 Jennifer Freedman and Jephtha Nguherimo
 Verrick and Patricia French
 Jerry Friedman
 Stephen and Sharon Friedman
 Enid Galliers
 Miriam Galston
 Paige Garber
 Kristen Garry
 Eric and Amy Gates
 Letty Gebreyohannes
 Lisa S. Gelb
 David Gelling
 Michael C. Giaquinto
 Craig Gibion
 Barbara Gill
 Judith W. Gilmore
 Dalbert and Nancy Ginsberg
 Jeffrey and Bonnie Gitlin
 George and Diane Gleason
 Hope Gleicher
 Jay Goldman and Rebecca Salon
 William and Linda Goldman
 Martin and Diane Goldstein
 John Golsen
 Jeffrey Gonyo
 Mary T. Goodson
 Howard Gorin
 Ann Gray
 Aaron Greenberg
 Allen Greenberg
 Jerry and Jean Greenspan
 Mark E. Griffin
 Kathleen Griffith
 Donna Grooms
 David and Brooke Gross
 Candace Groudine
 Bruce and Sue Guenther
 Anuj Gupta
 Thomas Gutierrez

Maggie and Don Hadley
 Penda D. Hair
 James and Mary Hamilton
 Bonnie Hammerschlag
 Benita Hampton
 Carol Hannaford
 Nancy Hansen
 Jocelyn Harden
 Robert and Katalin Hardi
 Nancy W. Harding
 Janet Hardy
 Ivan Harrell
 Linda Harrison
 Harry and Velma Galblum
 Foundation
 Gloria Harvey
 Patricia Harvey
 Wanda Hashemzadeh
 Diana Haskell
 Thomas Haslinger
 Ferdinand R. Hassler
 Judith Hautala
 Sheila Hawkes
 Ryan Hedges
 Daniel Hellerstein
 Lisa Henderson
 Krista Herdt
 George Christopher Hesterberg
 Matthew and Noelle Heyman
 Kimberly Hicks
 M. James Hirabayashi
 Linda Hirsch
 Lisa Hochheiser
 Jean Hochron
 Robert and Barbara Hoffman
 Stephen Holland
 Bernard M. Hollander
 Barbara and Kenneth Homon
 Judy Honig
 Anwarul Hoque
 David and Catherine Hostetler
 John Houston III
 Jean Hubbell
 Kent Hughes

Holly Hull
 Steve Hull
 Gabriel Hutter and Jennifer Ruark
 Kyoko Ikari
 Sarah H. Ingram
 Cathleen Irish
 Constance Ishio
 Diane Jacobsohn
 Andrew and Debra Jacobson
 Raymond Jacobson
 Trudy R. Jacobson
 Deborah Jarvis
 Anne Hale Johnson
 Myles Johnson
 Gordon and Cynthia Johnston
 David and Susan Jones
 Kristen Jones
 Jane Josephs
 Marc and Jeanie Kahn
 Wendy Kahn
 Monte Kalisch
 John and Diane Karlik
 James and Jill Kaufman
 Michael Keever
 Judy Keiffer
 Michael and Amy Kelleher
 Catherine Kelly
 Barbara Kendall
 Wilton and Joan Kennedy
 Patricia Kenney
 Jerry Kickenson
 Stephanie Killian
 Robert & Leslie Kim
 Jennifer Kimball
 Henry and Elise Kissman
 Richard and Barbara Kline
 Lois Knaus
 Matthew Koll
 Jeffrey and Sondra Komarow
 John and Rosa Koppel
 Amanda Beth Kornfield
 Julia C. Korenman
 Nancy L. Kosinski
 Daniel and Julie Krakower
 Cheryl Kreiser
 Karen Kullgren
 Gerard and Bonnie Kunkel
 Adam Kushner
 Hanns Kuttner and Rebecca Blank
 William Lander
 Neil and Ellen Lang
 Roger W. Langsdorf
 Leroy and Dreama LaRoche
 James Lawrence
 Keith and Robin Lawson
 Samuel and Martha Layn
 Marty Lederman and Lauren Rothfarb
 Edward Lee and Teresa Cheung
 Marilyn Joy Leeseberg

Walter Leginski
 Robert and Ellen Leibenluft
 Alan and Agnes Leshner
 Henry and Barbara Levine
 Judith Levy
 Neil Levy and Linda Perle
 Greg and Susan Lewis
 JoAnn Lewis
 Murray Lieberman
 Wilma Linares
 Bob Linehan and Claudia Meer
 Thomas and Denise Lionetti
 Donald and Carol Lipton
 Stephen Lofgren
 John and Roslyn Logsdon
 Jeffery Lubbers
 Alfred Luce
 Raymond and Janet Luczak
 Barbara Lux
 Michael and Ronni Lux
 Jim and Shirley Lyles
 Solange MacArthur
 Bobbie W. MacDonald
 Rosemary A. MacDonald
 Donald and Margaret MacGlashan
 Elizabeth Mackey
 Leonard and Sara Mangiaracina
 Jennifer Manlove
 Clayton Mansfield
 Robert L. Mapou
 Phyllis Marcuccio
 Fred Marinucci
 Serge Markov
 John and Lois Martin
 Clarice C. Mayers
 Bill McCloskey
 Peter McKenna
 F. Carroll McKown
 John McMahon
 Rusty and Sharon McNish
 Carlos and Patricia Medeiros
 Ann Medinger and Sean Beeny
 Robert and Karen Meister
 Edward and Anne Metcalf
 Michael and Lillian Metzger
 Florence K. Millar
 Rich and Shelley Miller
 J. Kevin Mills
 Farnoush Mirmiran
 William Mitchell
 Albert and Joan Modlin
 Wendall and Jo Ann Mohr
 Oliver and Patricia Moles
 Elizabeth T. Mooney
 Tom Moore and Amy Gambrill
 Michael and Shrinavaz Morelli
 Helen Morey
 Bruce Morrison
 Howard Moss and Betsy Roth
 Bruce Moyer and Ruth Lampi
 Larry and Janet Muenz



OPENING DOORS: FY12 DONORS AND SUPPORTERS

Sally Naughton
 Stephanie M. Nealer
 Ruthanne G. Neely
 Irwin G. Newman
 Louisa Nickerson
 Jean Noonan
 Stephen E. Nordlinger
 Albert E. Nugent Jr.
 Dorothy B. O'Donnell
 William and Patricia O'Hare
 Doug Olcott
 Judith S. Olmer
 Rebecca Olmstead
 Paul O'Rangers
 David and Glenna Osnos
 Robert and Paula Ott
 Thomas and Jeanne Parker
 Arthur Parsons and Linda Berman
 Connie Patterson-Norris
 David H. Pawlik
 Barrett and Fran Penan
 Peter Perl and Nina Shapiro-Perl
 Ronald Petersen
 Joseph Petrillo
 Hermina Pfeifer
 Ann Philips
 Joram Piatiorsky
 Martha Pleasure
 Johanna H. Pleijsier
 Joan C. Pollitt
 Robert and Susan Post
 Beverly Potter
 Richard and Lynne Power
 Jill Prater
 Amy Presley
 Alison Presti
 Nathan and Kathleen Prussian
 Michael and Ann Pupjak
 Betsy Pursell and Schroeder
 Stribling
 Arthur and Virginia Rabenhorst
 Pearl Radcliffe
 Roya Rashtchian
 Rebecca Rawls
 Arthur and Suzanne Reed
 Robert and Mary Resnik
 William and Patricia Reynolds
 Craig Rice
 Rachel Ritvo
 Marcus Roder
 Susan Ronan
 Mark Roncskevitz
 Lawrence and Judy Rosenblum
 Marge Rosensweig
 Miriam G. Rothchild
 Bruce Rothrock
 Jon and Colleen Rucker
 Gerald and Claire Rupert
 Jim and Sue Russ
 Charles and Camilla Russell
 Thomas E. Ryan

David Sager
 Melinda Salzman
 Cindy Sanquist
 John and Heather Satrom
 Terry Savage
 William Schaefer
 Walter and Barbara Scheiber
 Matthew Scheider
 David and Paula Schenkel
 Mary B. Schiffman
 Robert Schmitz and Gale Held
 Imogene Schneider
 Laurence and Susan Schor
 Nancy Schulze
 Lee Schwab
 Herman Schwartz
 Eric Schweitzer
 Nancy and David Scull
 Michael Scyphers
 Andrea Sedlak
 Leonard B. Seeff
 Harold Segall and Lauren Gross
 Marie Sejour
 Charles and Betty Sharp
 Charles and Lora Sheridan
 Tom and Marilyn Sherman
 Fred and Rhonda Shulman
 Martin and Carol Shulman
 Gong Tar Shyu
 Stanley and Bena Siegel
 David Sieradzki and Emily Novick
 Damon Silvers and Elissa McBride
 Thomas and Karen Sinderson
 Richard and Sarah Skillman
 Donald and Tina Slater
 Daniel Smith and Patricia Burns-Smith
 Rex Smith
 Chelsea Soneira and Jose Castro
 Mitchell Stengel and Carolyn Walker
 Malcolm Stevenson
 John I. Stewart and Sharon S. Stoliaroff
 Joan and Peter Stogis
 Danielle Stokes
 Craig Stoltz
 Alan Strasser and Trisha Hartge
 Bob and Laurie Sunshine
 Stephen W. Surko
 George and Nancy Sushinsky
 Kathleen Sussman
 Wayne and Sandra Swann
 Charles and Lee Talisman
 Joseph Tanis
 Priscilla Tapley
 Lawrence and Sandra Taub
 Len and Martha Taylor
 Phillipa Taylor
 Deborah Toll
 Susan Torbik



Supporter Cyndy Esty with board member Ellen Coppley.

Robert and Laurie Trippett
 Mitchell Tropin
 Robert and Nancy Turner
 Joshua Udler
 Leslie J. Ulanow
 Lynne Valcourt and Millard Arbutina Jr.
 Alvin and Carole Valentine
 Emily van Loon
 Thomas and Lillian Vander Male
 Robert Vogel
 Mark Walsh and Mary Vail
 Ronald and Patricia Walters
 Fred Walton
 Kenneth Warren
 Richard and Cynthia Warsh
 John and Victoria Weddle
 Richard and Alice Wegman
 Jane G. Weiman
 Mark and Deborah Weinstein
 Elizabeth Weitz
 James M. Weitzman
 Anne Wellington-Goldsmith
 Harold Wells
 Irma Lee Westrell
 Ben and Erika White
 Sandra G. Wilkof
 Rebecca Williams
 Roger Williams and Virginia Macomber
 Prince and Delores Willis
 Frank Winfield
 Henry Winokur and Rabbi Stephanie L. Bernstein
 C. Lawrence Wiser
 Samuel Witten and Joan Kleinman
 Charles and Nancy Wolfson
 Edward Woods
 Anne and Thomas Wotring
 James and Harriet Wright
 Alfred and Julia Wurglitz

Philip Yaffee
 Mark Young and Rachel Carren
 Judith Zickler
 John Zinner
 Susan Zusy
 Carl and Margaret Zwislser

MCCH appreciates all of our volunteers and in-kind donors, including those who deliver meals to our Home Builders Care Assessment Center men's emergency shelter, donate gifts during the holidays, participate in school supply donation drives, complete landscaping projects, volunteer at events and in the office, and so much more!

For a list of FY12 in-kind donors and volunteers, visit www.mcch.net, and click on How to Help.



OPENING DOORS: BOARD OF DIRECTORS AND STAFF (AS OF JUNE 30, 2012)

Board

Amy Williard, Chair
The Monitor Group, LLC
Laura Cecala, Vice Chair
Inside Mortgage Finance
Publications, Inc.
Jean Hochron, Secretary
Montgomery County Department
of Health and Human Services
John Cresham, Treasurer
Freddie Mac

April P. Gray Asare
Journey's Crossing Counseling
Patrick L. Clancy
Venable LLP
Ellen K. Copley
Community Member
Chuck Covell
Covell Communities, LLC
Craig England
England & Company

Marty Evans
Bechtel National, Inc.
Robyn A. Jones
Community Member
Amy Horton-Newell
American Bar Association
Dick Pettit
Pettit Companies

Affiliations are included for
identification purposes only.

Senior Staff

Susanne Sinclair-Smith, Executive Director
Julie Maltzman, Deputy Director of Programs
Diane Aten, Director of Development and Communications
Joanne Lam, Controller
Darrell Butler, Program Director, Home Builders Care Assessment Center
Anne Donohue, Program Director, Cordell Place
Alice Forcier, Program Director, Seneca Heights Apartments and Home First
Chandra Harris-Jackson, Program Director, Partnership for Permanent Housing
Nili Soni, Program Director, Safe Havens, Creative Housing Initiative Pilot Project, and Hope Housing
John Enagonio, Director of Real Estate, Coalition Homes, Inc.



600-B East Gude Drive • Rockville, MD 20850
301.217.0314 • 301.217.0824 (fax)
www.mcch.net